

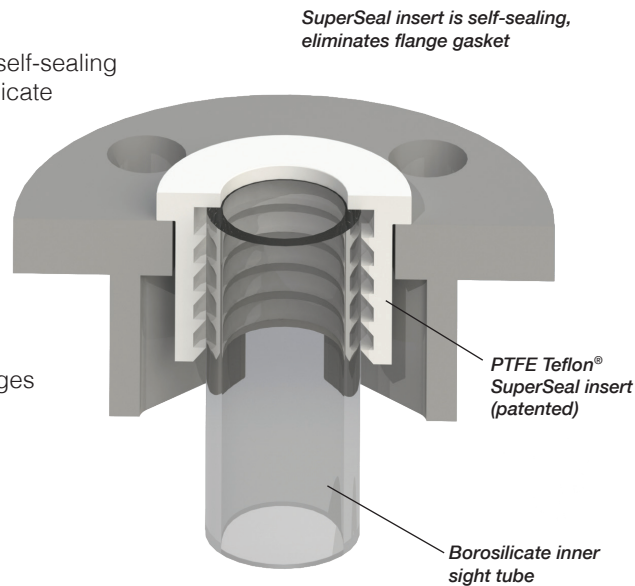
# MODEL LS SINGLE TUBE ARMORED LEVEL GAUGE (PATENTED)



- Approved by the Factory Mutual System (150° F max)
- Max length for FM approved models per specification below
- Unobstructed visibility
- Maintenance free
- Patented one-piece SuperSeal inserts are self-sealing
- Wetted parts are PTFE Teflon® and borosilicate
- Rated up to 285 psig (ANSI 150)
- Optional 316 SS shields
- ANSI Class 300 lb gauge flanges are available on request
- Custom designs available

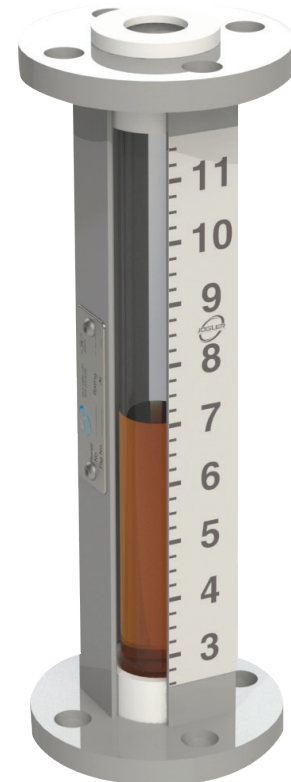
### Standard Construction

- Borosilicate sight tubing
- PTFE Teflon® SuperSeal inserts
- Epoxy-coated carbon steel shield and flanges
- ANSI Class 150-lb flanges

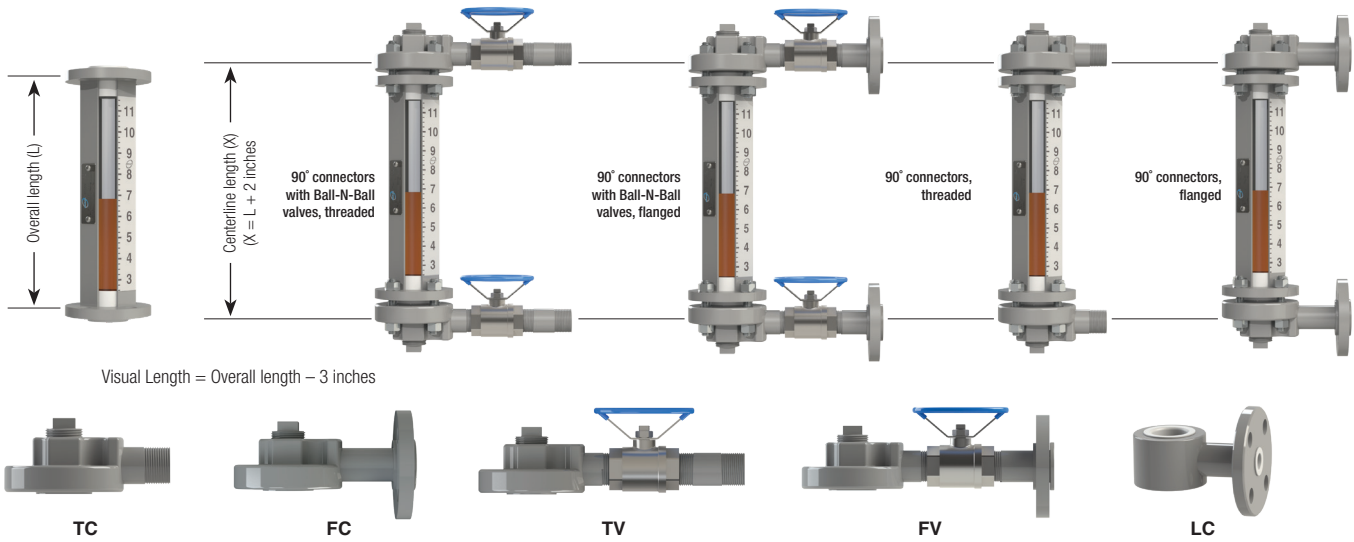


Model LS Specifications				
Sight tube material	Sight tube size, in.	Gauge rating, psig	Flange size, in. ANSI 150	Max length FM approved, in.
HP	1.00	150	1.00	120"
PI	1.00	150	1.00	119"
HW	1.00	285(1)	1.00	48"
PI	1.50	135	1.50	119"
HW	1.50	285(1)	1.50	48"
PI	2.00	115	2.00	119"
HW	2.00	285(1)	2.00	59"

PI = Standard Borosilicate    HW = Heavy Borosilicate    HP = High Pressure Borosilicate  
NOTE: (1) Actual flange pressure rating may be less based on material selected.



# GAUGE-TO-VESSEL CONNECTIONS



## Gauge Connectors

- Threaded 1/2 to 1 in. NPT (TC)
- Flanged 1/2 to 2 in. (FC)
- Carbon steel, 316 SS, or CPVC
- Socket weld or weld neck flanges are available

## Gauge Connector with Ball-N-Ball valves

- Threaded 1/2 to 1 in. NPT (TC)
- Flanged 1/2 to 2 in. (FC)
- Carbon steel, 316 SS, or CPVC
- Socket weld or weld neck flanges are available

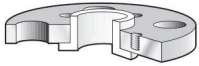
## PTFE Teflon®-lined Gauge Connector

- Flanged 3/4, 1, 1-1/2, 2 in.
- 150 or 300 lb. ANSI
- Carbon steel
- 316 SS

# GAUGE ACCESSORIES

## Lined Reducing Flanges

- PTFE Teflon®-lined
- Sizes up to 10 in. x 8 in.
- Used in place of gauge connectors for non-standard installations



## Calibration Scales

- Polycarbonate or 316 SS
- Inches/feet, running inches, metric, or percent

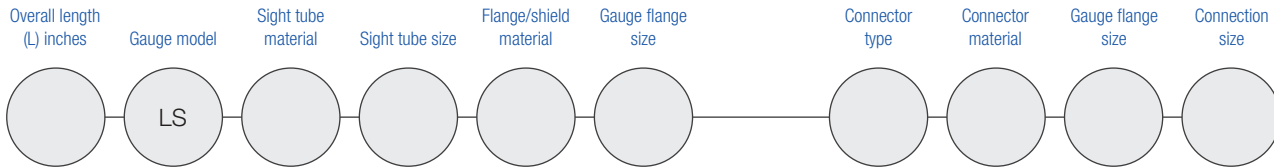


## Explosion-Proof Illuminators

- 120-VAC, 56-watt, 3000-hour
- Class 1, Division 1, B, C, D, E
- Requires one lamp per 6 ft. of visual length

# GAUGE AND CONNECTOR PART NUMBERS

Use the spaces below to generate the model number for your gauges. Codes for materials and diameters are from the chart at right.



## Options

- Calibrated scale: Polycarbonate \_\_\_ 316 SS \_\_\_  
Feet/inches \_\_\_ Running inches \_\_\_ Metric \_\_\_ Other \_\_\_
- Level floats: Orange PP \_\_\_
- Explosion-proof illuminator
- Sight tube redlining
- Vent and drain valves: Carbon Steel \_\_\_ 316 SS \_\_\_ CPVC \_\_\_
- PTFE-lined reducing flanges: Size \_\_\_ X \_\_\_

## Codes for Part Numbers

**Sight Tube Material**  
Standard Borosilicate  
High-pressure Borosilicate  
Heavywall Borosilicate

**Shield/Flange Material**  
Carbon Steel  
316 SS

**Connector Material**  
Carbon Steel  
316SS  
CPVC

Code	Size, Inches	Code
PI	0.50	05
HP	0.62	06
HW	0.75	07
	1.00	10
	1.50	15
CS	2.00	20
S6	2.25	22
	2.75	27
	3.00	30
CS	4.00	40
S6		
CP		